



**An immersed electrical level transmitter for sea water application - stainless steel housing**

The PL3702C-I is a ceramic family transmitter specially designed for sea water application thanks to its composite housing which avoids the electro chemical corrosion and sea water organic deposits.

The PL3702C-I is linearised. The 316L stainless steel remote electronic box includes the amplifier with zero and span adjustment. The cell is sealed inside a composite housing (IP68 rating).

# PL3702C-I - Technical specifications

## TECHNICAL DATA

**Gauge pressure range:** 120 mbar to 4 bar

**Overpressure:** 6 to 25 bar

**Protection class:**

- Transducer: IP68
- SS Remote electronic box: IP66/67

**Intrinsic safety:**

Ex ia IIC or IIB T6 - Ex iaD A20 T70°C (Max 50 m cable between transducer & remote electronic box)

**Power supply:** 12-28 Vdc

**Output signal:** 4-20 mA, 2-wires

**Accuracy:** ± 0,3% FS at 20°C

**Operating temperature ranges:**

- Transducer: - 40° to +60°C
- Remote electronic box: - 25° to + 85°C

## SPECIAL FEATURES

**Mechanical parts:**

- Remote Electronic box: 316 L stainless steel
- Sensor housing: composite
- Diaphragm: ceramic

**Recommended zener barrier:** MTL7787+

For safe area installation, the transmitter can be installed without zener barrier

Assembly **3702C - I G** With:

- internal bracket (option: flange PN20 DN40)

Mechanically & electrically compatible with PL3700 SS

Approved by major classification societies

No sea water corrosion

## TECHNICAL DOCUMENTATION

Installation manual	MI5090
Technical manual	NT5090
Maintenance manual	MM5090

## Enraf Marine Systems

Parc Technologique de Saint Aubin

Bâtiment Mercury

91193 Gif sur Yvette - France

Tel: + 33 (0)1 60 19 81 86

Fax: + 33 (0)1 60 19 82 66

E-Mail: [contact.marine@honeywell.com](mailto:contact.marine@honeywell.com)

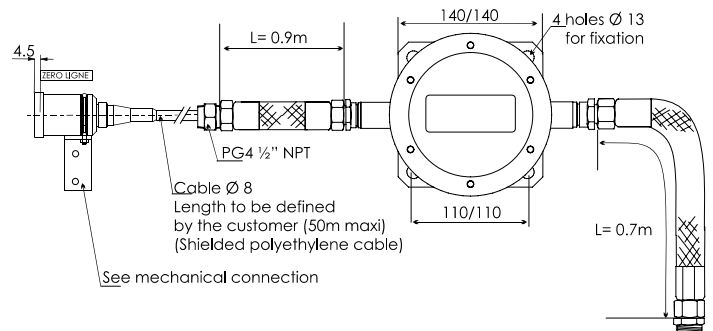
[www.enrafmarine.fr](http://www.enrafmarine.fr)

FC-PL3702 C-I

January 2008

© 2008Honeywell international Inc.

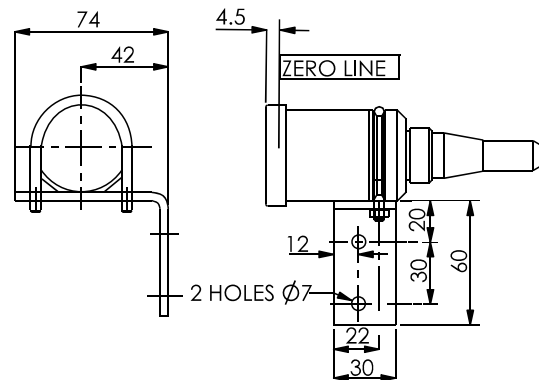
## MECHANICAL FITTINGS & DIMENSIONS



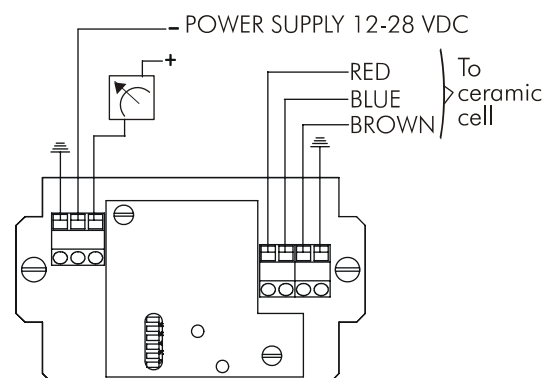
Note: cable length needs to be specified 8 weeks before delivery

Weight : 5 kg

## MECHANICAL CONNECTION



## ELECTRICAL CONNECTION



**Honeywell**