



### Liquid Level Switch for Chemical and High Temperature Products – High Level (95%) & Overflow (98%)

The Lidec L92-CHT Liquid Level Switch, specially designed for maritime applications, is highly resistant to chemicals or high temperature liquid products.

Equipped with two welded probes, it is a fully static device using an operating principle based on the propagation of a surface wave which makes avoid any mechanical moving parts. The detector is insensitive to vibration, shock and electrical disturbances and its reliability is ensured by a built-in function for monitoring electronic or transducer failures.

The Lidec L92-CHT is designed for installation on the deck. The detector requires no calibration, as it is not influenced by any type of fluid.

# L92-CHT - Technical Specifications

## Technical Data

<b>Accuracy:</b>	±2mm
<b>Operating temperatures:</b>	- Ambient: - 25 °C +70°C - Liquid: - 40°C +150°C - 40°C +250°C (optional)
<b>Power supply:</b>	18 to 28 Vdc
<b>Protection class:</b>	IP66/67
<b>Intrinsically safe:</b>	IECEX, ATEX. II 1 G D Ex ia IIC or IIB T6 or T5 or T4 Ga Ex ia IIIC T80°C or T95°C or T130°C Da IP6X

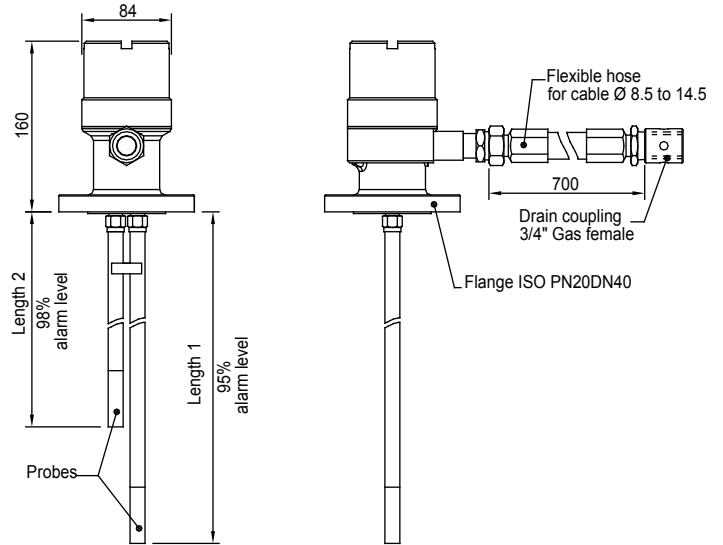
## Special Features

- Materials:**
- Probe: Stainless steel 904L.
  - Head : Stainless steel 316L.
  - Flexible hose: Stainless steel 316L.
- Probes length:** on request (3000 mm maximum).
- Flange:** ISO PN20 DN40
- Output signals:**
- 2 x 18 mA (outside liquid)
  - 2 x 6 mA (detection of liquid)
- Welded detection probes.**
- For **chemical or high temperature products.**
- ON LINE TEST** is done without opening Lidec by applying magnet on top of the connecting box (HM-11-40-ENG).

## Technical Documentation

<b>Installation manual:</b>	NT401
<b>Maintenance manual:</b>	NT401

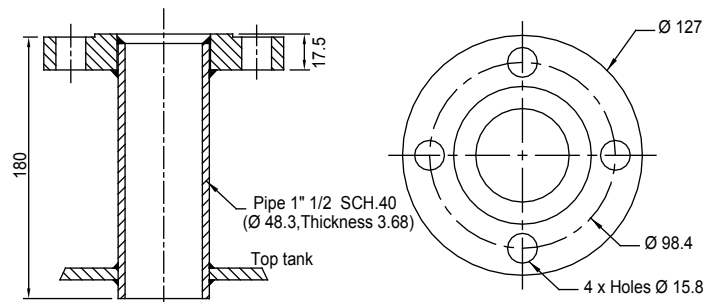
## Mechanical Fittings & Dimensions



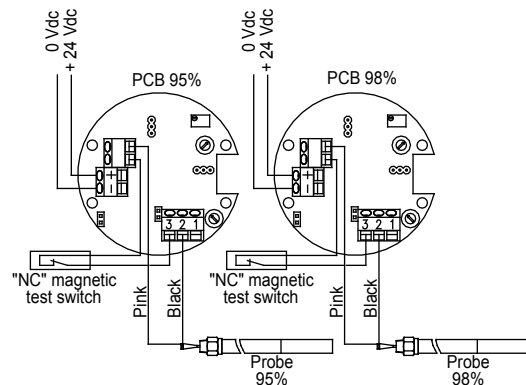
Note: Lengths 1 & 2 need to be specified 8 weeks before delivery

Weight : 5 Kg

## Process Connection



## Electrical Connection



## Honeywell Marine SAS

9, rue Isaac Newton  
 ZA Port Sec Nord, Esprit 1  
 18000 Bourges – France  
 Phone : + 33 (0) 248 237 901  
 Fax : + 33 (0) 248 237 903  
 E-Mail: contact.marine@honeywell.com  
 www.honeywellmarine.com

HM-11-51-ENG  
 February 2013  
 © 2010 Honeywell International Inc.

**Honeywell**